

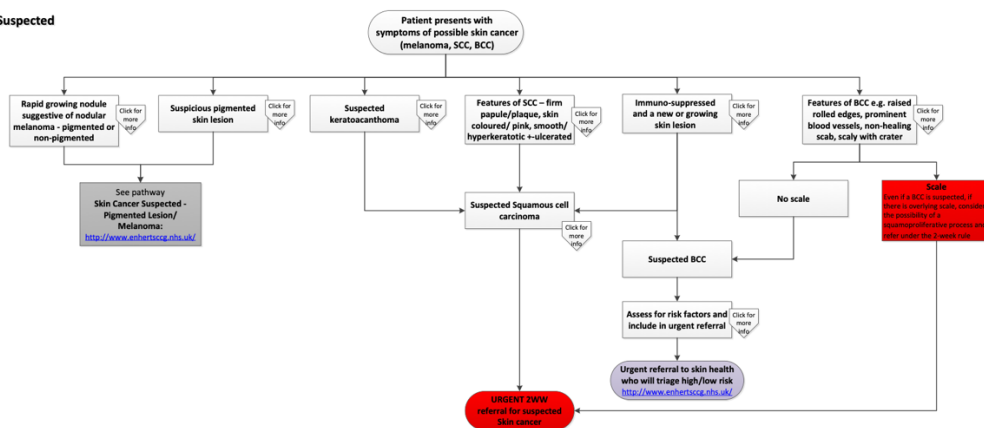
Skin Cancer (including BCC) – Suspected

Guidance for the removal of suspected basal cell carcinoma (BCC)

Suspected BCCs should only be excised in primary care in accordance with the NICE guidance on Improving Outcomes for People with Skin Tumours including melanoma (May 2010): <https://www.nice.org.uk/guidance/csg8/resources/>

Specific sites of concern are sun-exposed areas such as the scalp, face, hands and arms, particularly in fair-haired patients.

(Macmillan Rapid Referral Guidelines, July 2015)



Rapid growing nodule suggestive of nodular melanoma - pigmented or non-pigmented

For images of nodular melanoma see: <https://www.dermnetnz.org/topics/nodular-melanoma-images/>

Nodular melanoma may arise on any site, but is most common on exposed areas of the head and neck.

Nodular melanoma presents as a rapidly enlarging lump (over several weeks to months). The characteristics of nodular melanoma include:

- Larger size than most moles – >6 mm and often a centimetre or more in diameter at diagnosis
- Dome-shaped, often symmetrical firm lump
- Single colour or variable pigmentation – most often black, red or skin coloured
- Smooth, rough, crusted or warty surface
- Ulceration or bleeding
- Itching or stinging

One-third of nodular melanomas are not pigmented. They lack the ABCD melanoma warning signs. (Asymmetry, Border irregularity, Colour variation, large Diameter).

They can mimic pyogenic granuloma.

Lesions suggestive of nodular melanoma should be referred as suspected cancer - see *Skin Cancer Suspected - Pigmented Lesion/ Melanoma pathway*.

Figure 1: Guidance for removal of suspected basal cell carcinoma (East and North Hertfordshire CCG) / NHS Hertfordshire and West Essex Integrated Care Board (HWEICB)) - <https://www.enhertscg.nhs.uk/sites/default/files/pathways/Skin%20Cancer%20-%20Suspected.pdf>

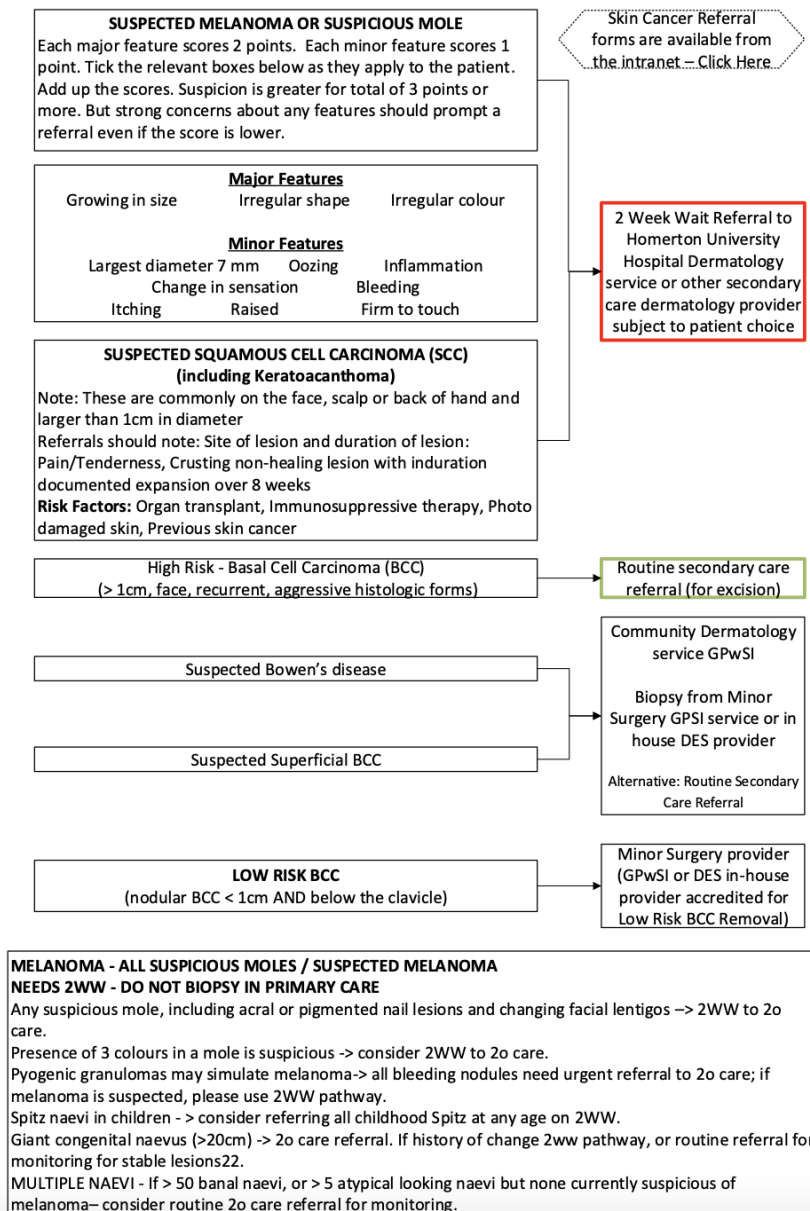


Figure 2: Patient skin cancer referral pathway (Homerton Healthcare NHS Foundation Trust) - <https://gp-website-cdn-prod.s3.amazonaws.com/pathway-downloads/1518527621-3d8cfcf309d081e7aa8a3182a4100a01.pdf>